



Land Survey Monument Record Rev. Feb 2002



- 1) Land Corner Restoration
- Land Corner Establishment
- Other:

2) Description of corner evidence found or a concise statement of the method used to re-establish the corner:

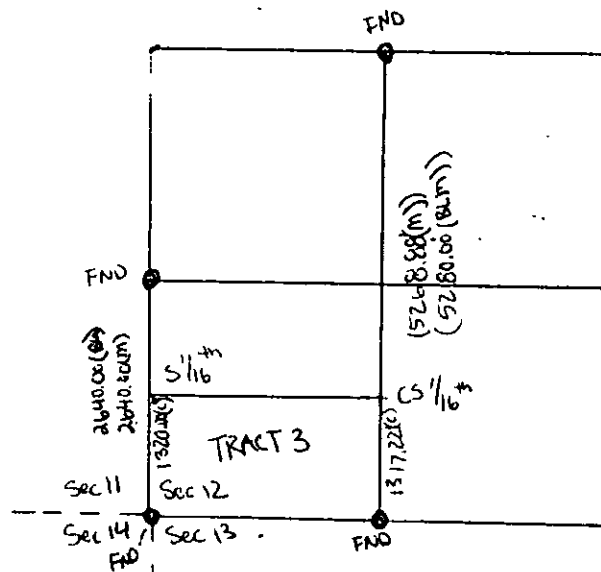
Recoverd the West 1/4 corner of Section 12 and Section Corner 11, 12, 13, and 14, Township 11 North, Range 3 West, Seward Meridian. Proportioned bewteen the W1/4 and Section Corner.

3) Description of monument and accessories established to perpetuate the location of the monument.

S 1/16 Corner, Sec 12, T11N, R3W, SM, AK

Set 1-1/4" Yellow Plastic Cap on 5/8" x 30" Rebar, 0.1' above grade, stamped LS14444.

4) A sketch showing the relative location of monument and reference points or a sketch showing the monuments used and the measurements made to determine the position of the monument being established. (Use additional sheets if necessary)



Date of field work July 2017

Surveyor's Certificate and Stamp

5) I, Taylor Maxwell Moore, registration no. 14444
do hereby certify that I was in responsible charge of the
surveying work described in this record and that to the
best of my knowledge the information presented herein
is true and correct. Date July 25, 2017

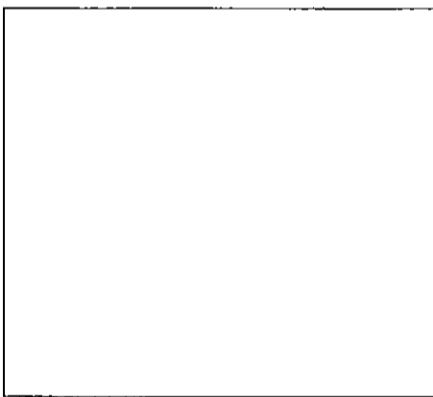


Corner Description

6) Corner S 1/16,
Potter Creek Subdivision,
Section 12, Township 11N, Range 3W
Seward Meridian, Alaska. Date Filed 8-27-1971
Recorder's No: 71-202, Anchorage Recording District.

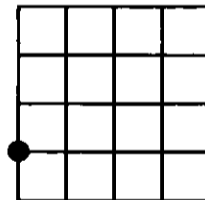
If unsurveyed, include protracted section number.

7) Anchorage
Recording District



(DO NOT FILL IN)

8) ● = Location of Monument
1" = 1 Mile



Index Ref. No. _____

9) Return to: Taylor Moore
Enterprise Engineering, Inc.
2525 Gambell St. Suite 200
Anchorage, AK 99503

